



Jayawant Shikshan Prasarak Mandal's
JSPM Narhe Technical Campus

S. No. 12/2/2 and 14/9, Narhe, Tal : Haveli, Dist.: Pune – 411041

Phone : +91 20 2460 8700, 701, 702 Email : director@jspmntc.edu.in Web : www.jspmntc.edu.in

Affiliated to Savitribai Phule Pune University. Approved by AICTE New Delhi and DTE Maharashtra.

DTE Code : 6755 PUN Code : CEGP019070 AISHE Code : C-45874



Date: 12/12/2021

To,

The Coordinator,

NAAC, Bengaluru.

Subject: Number of professional development /administrative training programs organized by the institution for teaching and non-teaching staff during the year

Reference: 6.3.3 Number of professional development /administrative training programs organized by the institution for teaching and non-teaching staff during the year

Dear Sir/Madam,

Sample evidence of its usage (activity) is enclosed herewith.




Director
JSPM Narhe Technical Campus
Narhe, Pune-41.

Enclosure-

1. Activity Report



in:sent invitation



Compose

Inbox 9,818

Starred

Snoozed

Important

Chats

Sent

Drafts 574

Categories

Social 2,451

Meet

New meeting

Join a meeting

Hangouts

Dr. Dipika +

Amit, Ajay Kumar

Invitation for Guest Lecture on "Being Winner with Power of thought"



Dr. Dipika Pradhan <deepika01513@gmail.com>

to bkkamalmadhuban, mmsardeshmukh2016, bcc: manisha_ds123

Respected sir;

As per our discussion, Please accept the invitation letter. We are arranging Guest lecture on Wednesday 30th June 2021 at 11.00 AM thr Telecommunication students and staff, JSPM Narhe technical campus, Pune. Kindly consider the invitation and find the attachment.

Thanking you,



Regards,

Dr. DIPIKA PRADHAN

Assistant Professor

PHD(Electronics Engg)

Dept. of Electronics and Telecommunication

JSPM Narhe Technical Campus

Contact : 8275597442,

E-mail id: deepika01513@gmail.com

WEBSITE : jspmntc.edu.in/

Reduce, Reuse and Recycle. Go

GREEN and please consider our



Voi
LTE



50% 10:52 AM



Zoom

Leave

REC



Unmute



Start Video



Share

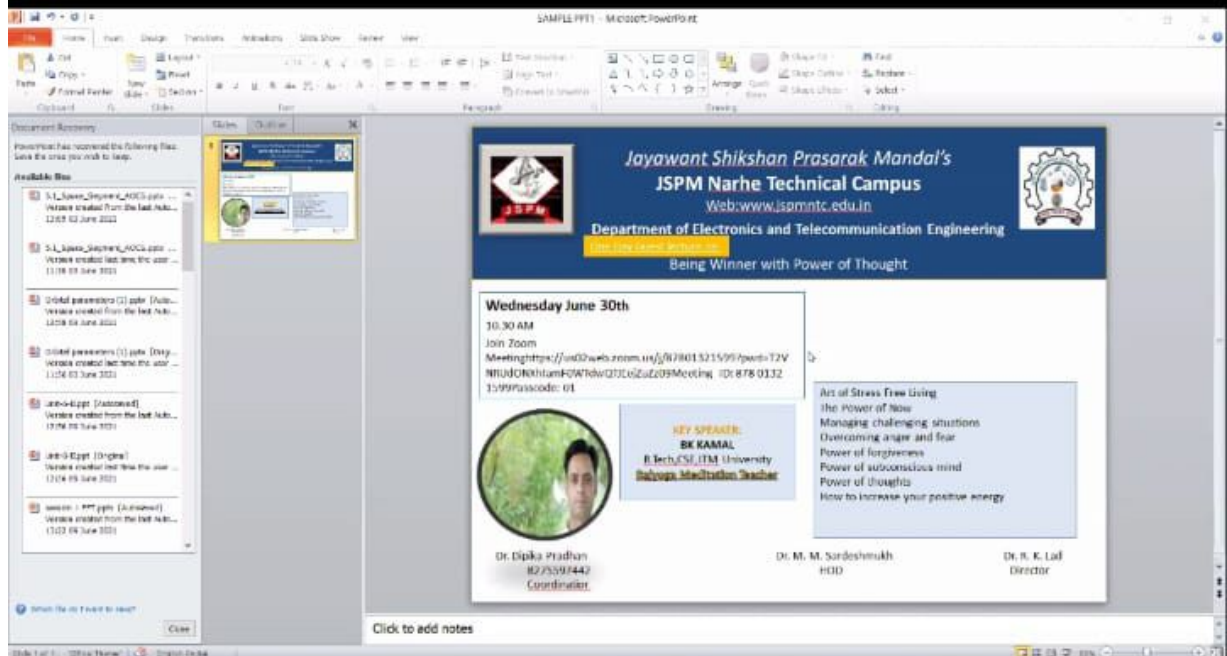


55

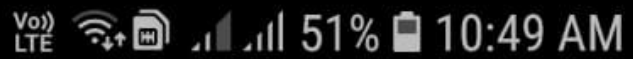
Participants



More



Deepika Pradhan's screen



Deepika Pradhan's screen

REC



BK Kamal Madhuban



Jayawant Shikshan Prasarak Mandal's
JSPM Narhe Technical Campus

S. No. 12/2/2 and 14/9, Narhe, Tal : Haveli, Dist.: Pune – 411041

Phone : +91 20 2460 8700, 701, 702 Email : director@jspmntc.edu.in Web : www.jspmntc.edu.in

Affiliated to Savitribai Phule Pune University. Approved by AICTE New Delhi and DTE Maharashtra.

DTE Code : 6755 PUN Code : CEGP019070 AISHE Code : C-45874



DEPARTMENT OF MECHANICAL ENGINEERING (SECOND SHIFT)

Date: 14/09/2021

NOTICE

FDP on Data Analysis Using Graphical Interpretations

All faculties of Mechanical Engineering (Second Shift) are hereby informed that the department is organizing “FDP on Data Analysis Using Graphical Interpretations”, on **15th September, 2021** by Prof. A. N. Shaikh (Pursing PhD, MIT WPU, Pune). The FDP is scheduled on **15th September, 2021, Wednesday at 2:30 pm.**

Prof. NandJee K.
Coordinator
Mechanical Engineering Dept.
(Second Shift)

Dr. M. A. Kumbhalkar
HOD
Mechanical Engineering Dept.
(Second Shift)



Jayawant Shikshan Prasarak Mandal's
JSPM Narhe Technical Campus

S. No. 12/2/2 and 14/9, Narhe, Tal : Haveli, Dist.: Pune – 411041

Phone : +91 20 2460 8700, 701, 702 Email : director@jspmntc.edu.in Web : www.jspmntc.edu.in

Affiliated to Savitribai Phule Pune University. Approved by AICTE New Delhi and DTE Maharashtra.

DTE Code : 6755 PUN Code : CEGP019070 AISHE Code : C-45874



DEPARTMENT OF MECHANICAL ENGINEERING (SECOND SHIFT)

Date: 15/09/2021

Report

FDP on Data Analysis Using Graphical Interpretations

Faculties of Mechanical Engineering (Second Shift) have attended “FDP on Data Analysis Using Graphical Interpretations”, on 15th September, 2021, Wednesday at 2:30 pm. The FDP is conducted by Prof. A. N. Shaikh (Pursing PhD, MIT WPU, Pune).

The FDP has started at its scheduled time. Prof. A. N. Shaikh sir has demonstrated to analyze given data through graphs in excel sheet, graph plotter. He has also demonstrated to solve equations in MATLAB solver. The session is also chaired by Dr. Manoj Kumbhalkar and shared his view on data analysis. The FDP is organized keeping in view to train students for their mini, and final year projects, as well as faculties output through some published papers in world class journals. A few photographs of the FDP are attached herewith.



Figure 1 Prof A N Shaikh is demonstrating on various graphs plotting tools



Figure 2 Dr Manoj A Kumbhalkar is conducting session on data analysis

Prof. NandJee K.
Coordinator
Mechanical Engineering Dept.
(Second Shift)

Dr. M. A. Kumbhalkar
HOD
Mechanical Engineering Dept.
(Second Shift)

Date: 15/09/2021

FDP on Data Analysis Using Graphical Interpretations

[illegible]

[Handwritten signature]



Dr. M. A. Kumbhalkar
HOD
Mechanical Engineering Dept.
(Second Shift)

Head
Department of Mechanical Engineering
JSPM Narhe Technical Campus
R.S.S.O.E & R. Narhe, Pune - 411 041

CERTIFICATE

FDP ON DATA ANALYSIS USING
GRAPHICAL INTERPRETATIONS



This is to certify that

SHAIKH ALIMODDIN NIZAMODDIN

has conducted sessions in

FDP on Data Analysis Using Graphical Interpretations

Conducted by Department of Mechanical Engineering (II-Shift), JSPM Narhe Technical Campus, Pune

on 15/09/2021



Mr. Nand Jee K.
Workshop Coordinator

Dr. M. A. Kumbhalkar
Head
Mech. Engg. Dept. (II-Shift)

Dr. R. K. Lad
Director
JSPM Narhe Technical Campus

CERTIFICATE

FDP ON DATA ANALYSIS USING
GRAPHICAL INTERPRETATIONS



This is to certify that

KAMBLE ASHWIN ANANDRAO

has Participated sessions in

FDP on Data Analysis Using Graphical Interpretations

Conducted by Department of Mechanical Engineering (II-Shift), JSPM Narhe Technical Campus, Pune

on 15/09/2021



Mr. Nand Jee K.
Workshop Coordinator

Dr. M. A. Kumbhalkar
Head
Mech. Engg. Dept. (II-Shift)

Dr. R. K. Lad
Director
JSPM Narhe Technical Campus